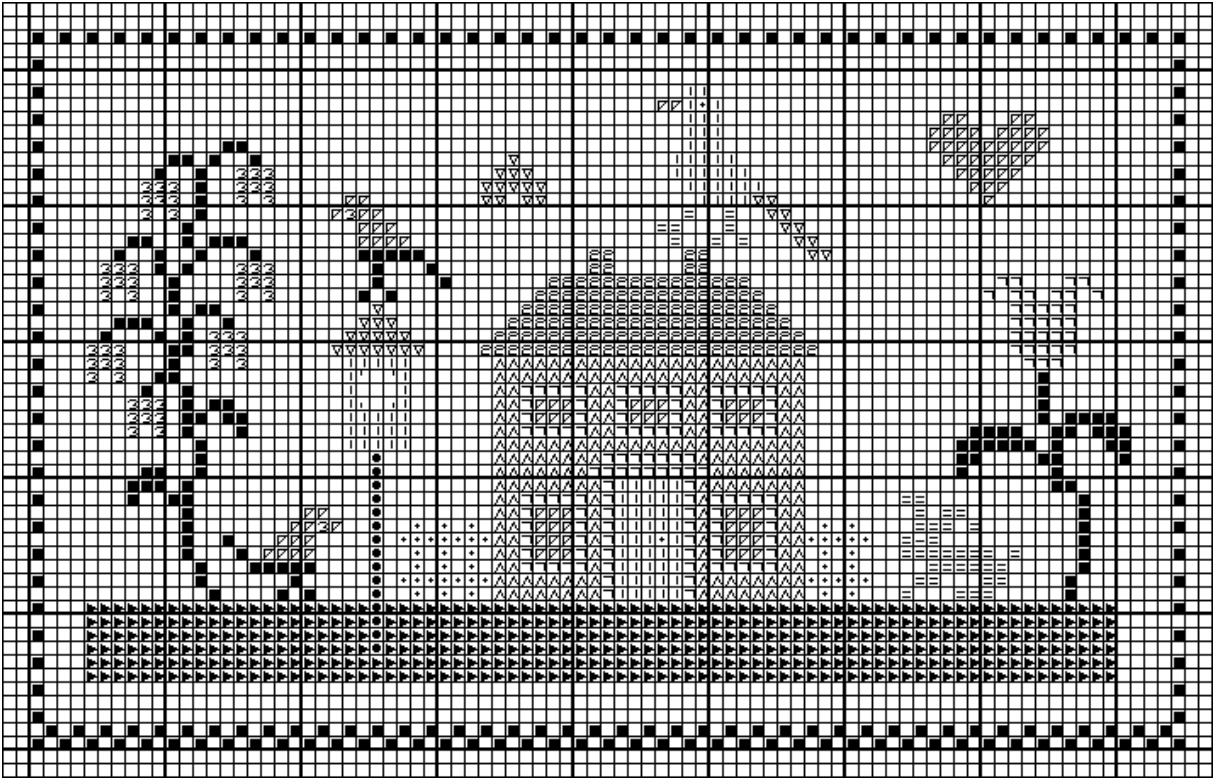
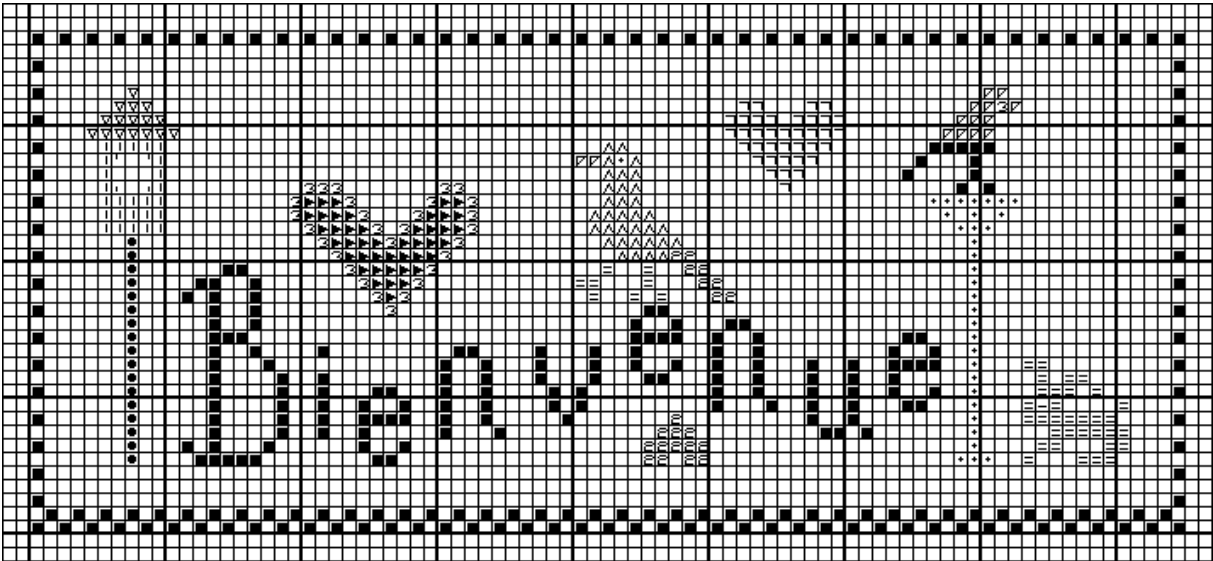
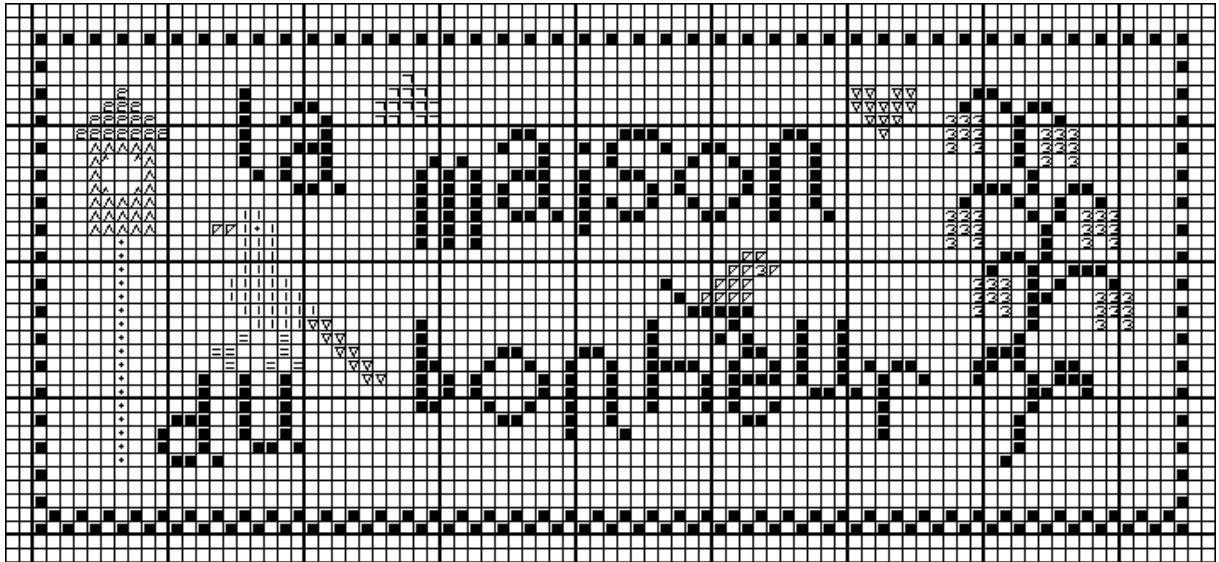


# Les quatre saisons du PCB

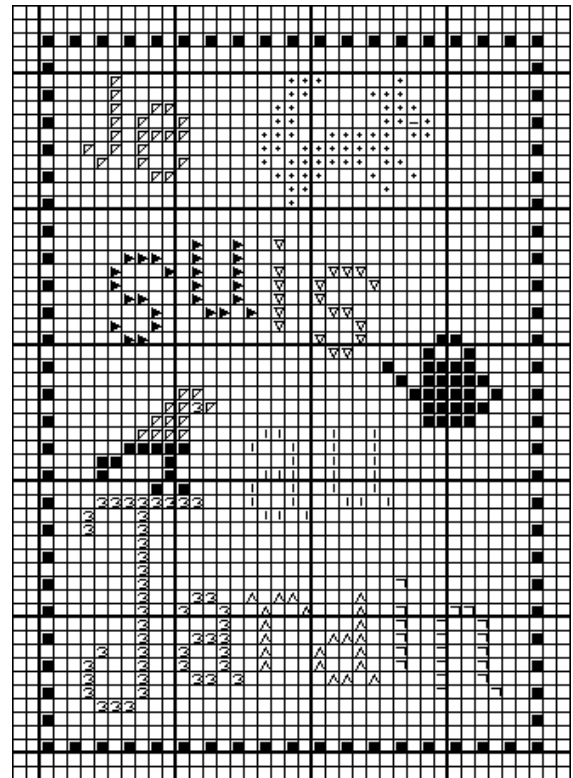
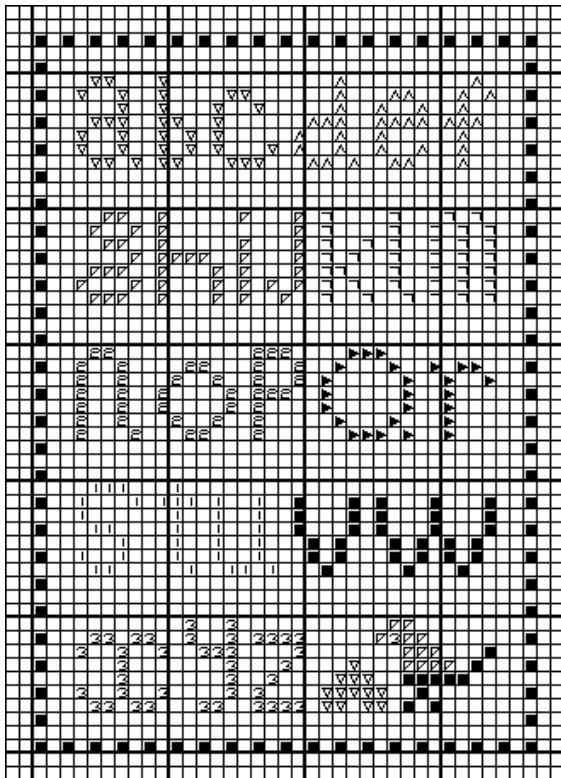


85 points X 53 points

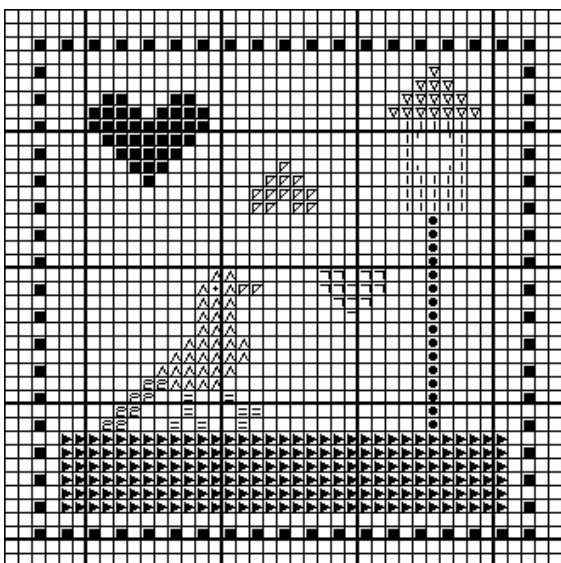
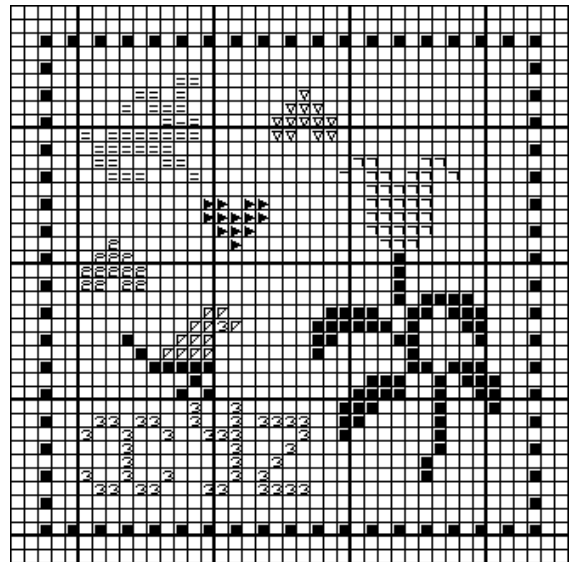
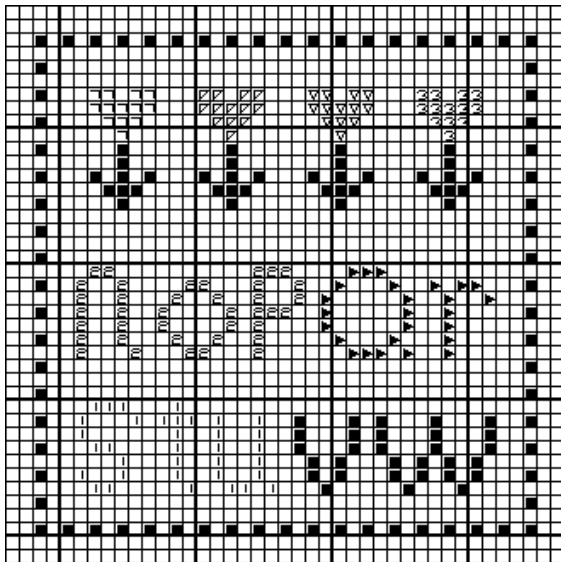
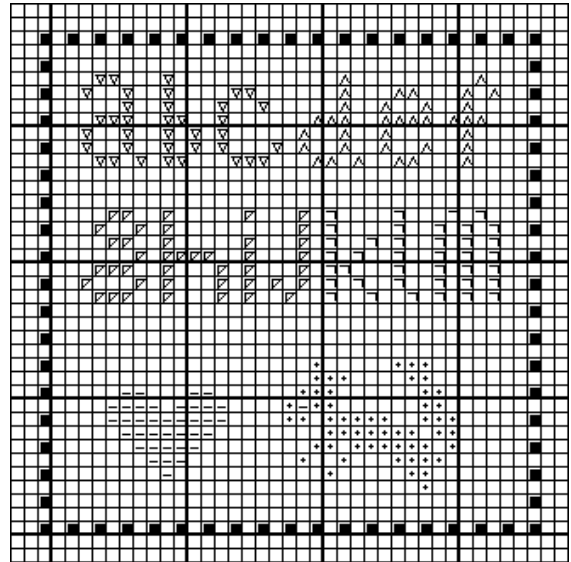
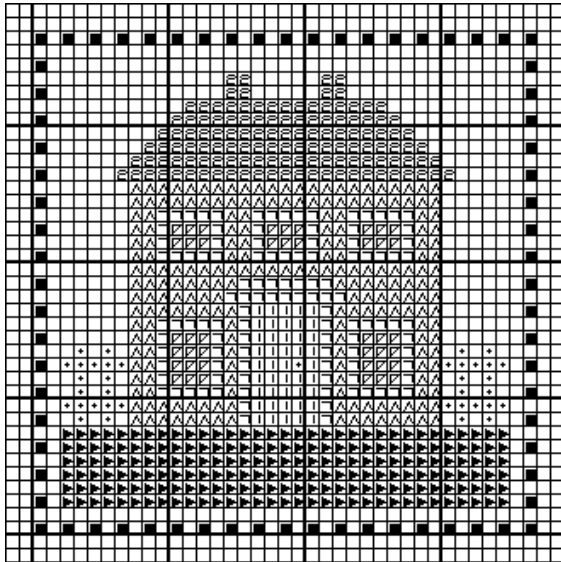




85 points X 37 points








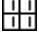







37 points X 53 points



37 points X 37 points  
Les quatre saisons du PCB Printemps

Cet ouvrage se brode en 2 fils sur 2 fils.  
Points utilisés : point de croix et demi-point.

### Couleurs DMC

-  vert foncé 3051
-  vert moyen 3052
-  vert clair 3053
-  rose foncé 221
-  rose moyen 223
-  rose clair 224
-  bleu foncé 930
-  bleu moyen 931
-  bleu clair 932
-  brun 840
-  roux 435
-  jaune 422
-  gris 844

Création Cathy Roy pour le PCB



2006

