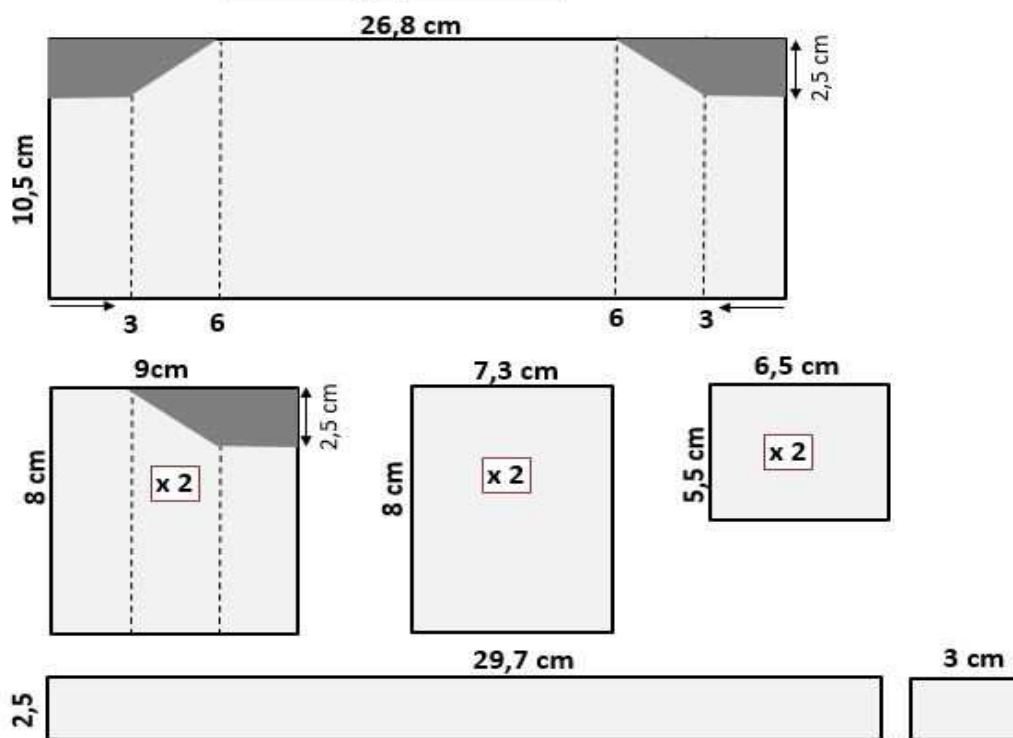


Tuto carte à volets

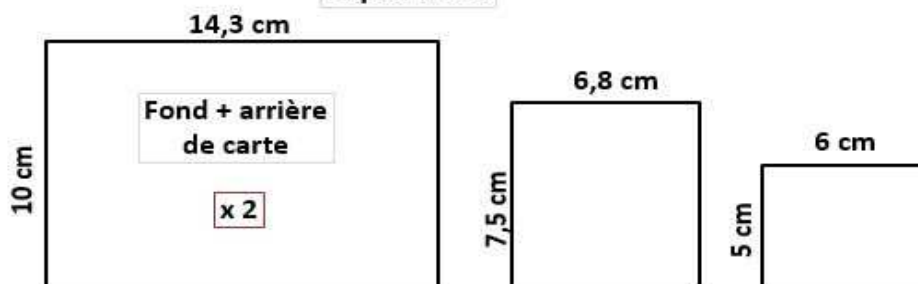
Yvette Lange - www.dames2scrap.fr - y.lange@wanadoo.fr



Structure papier couleur



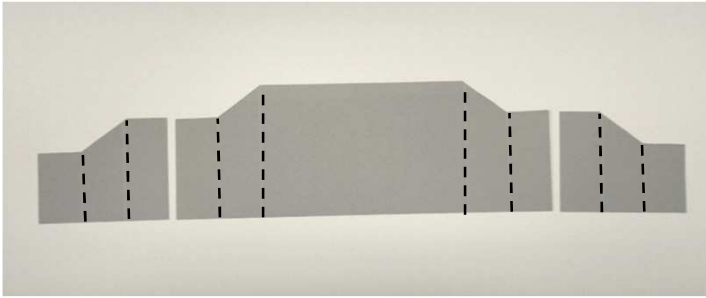
Papier blanc



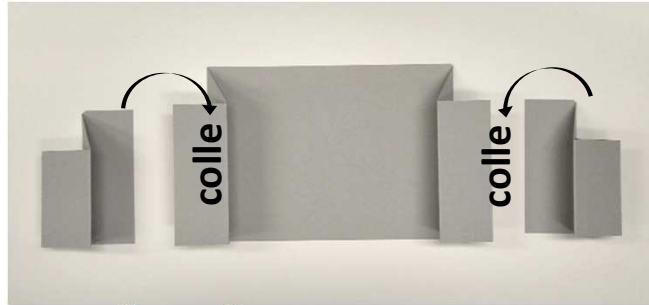
Papier imprimé



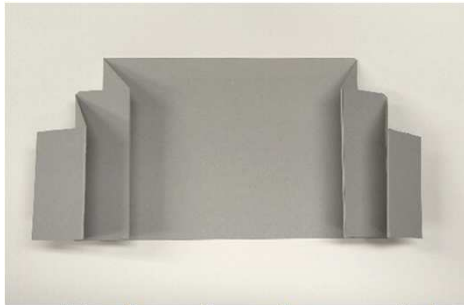
- (3x) 1,5 x 5 plier à 1 - 2 - 3 - 4
- (1x) 1,5 x 7,5 plier à 1,5 - 3 - 4,5 - 6
- (1x) 1,5 x 10 plier à 2 - 4 - 6 - 8



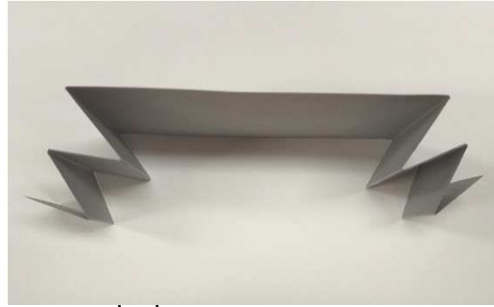
couper



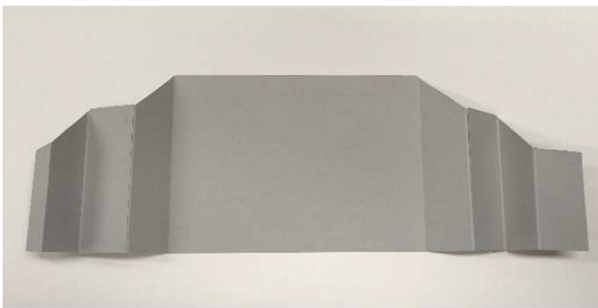
plier et coller



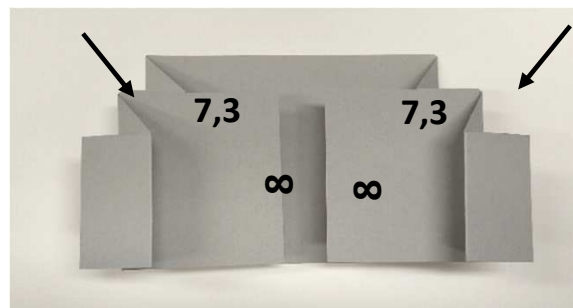
on obtient ceci, **bien aligner sur le bord bas**



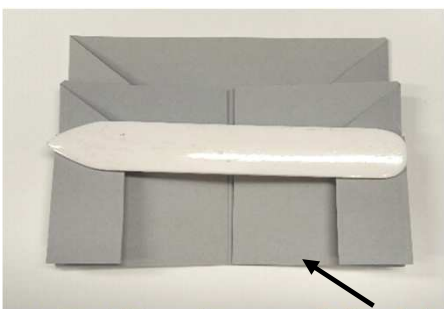
vue du dessus



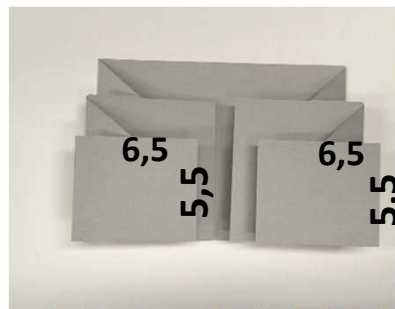
déplier légèrement



coller les rectangles 8 x 7,3 bien dans les coins



aplatir et **bien aligner sur le bord du bas**



coller les rectangles 5,5 x 6,5, **bien aligner sur le bord bas**



on obtient ceci



coller le rectangle blanc

il ne reste plus qu'à décorer